



MAHSA
UNIVERSITY

BACHELOR OF ENVIRONMENTAL HEALTH AND SAFETY [HONS]

KPT/JPS (R/853/6/0026) (A11426) 08 / 20

FACULTY OF HEALTH SCIENCES

“

"The environment and the economy are really both two sides of the same coin. If we cannot sustain the environment, we cannot sustain ourselves."

**- Wangari Maathai
Greenpeace Activist**

”



OVERVIEW

Environmental Health and Safety is a broad study of all aspects of human health including quality of life determined environmental factors which includes biological, chemical, physical, social and psychosocial factors.

The Bachelor of Environmental Health and Safety (Hons) programme is designed to provide graduates with the necessary management skills and leadership in the management of Environmental Health and Safety.

This programme enables its graduate to seek employment in public sector as environmental health officer in municipal office, Department of Environment, Ministry of Health, or as occupational health executive in private company and research institution.

PROGRAMME STRUCTURE

Year 1

- Anatomy & Physiology Chemistry for Environmental Health
- Introduction to Public and Environmental Health
- Introduction to Soil and Hydrogeology
- Biochemistry for Environmental Health
- Microbiology for Environmental Health
- Communicable and Non Communicable Diseases Control
- Epidemiology and Biostatistics
- Pest and Vector Management
- English for Health Science
- Malaysia Studies
- Islamic Studies/Moral Education

Year 2

- Research Methodology
- Built Environment, Housing and Technology
- Environmental Health Risk Assessment
- Environmental and Occupational Toxicology
- Applied Ecology
- Health Promotion and Education
- Practical Training

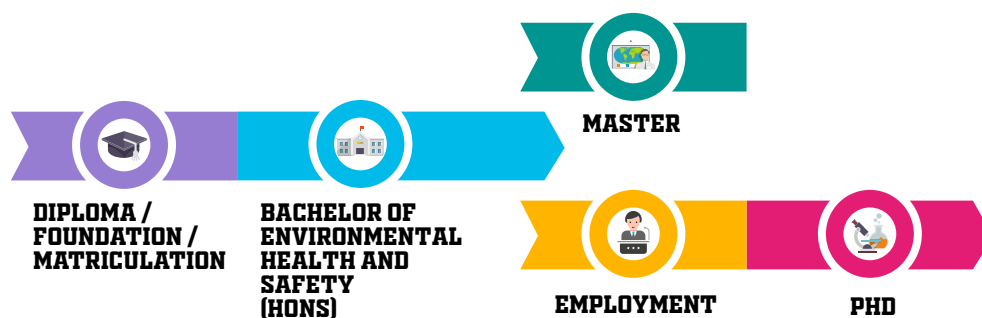
Year 3

- Integrated Solid Waste Management
- Management and Safety of Toxic Substances
- Pollution and Environmental Monitoring and Management
- Occupational Health and Safety
- Environmental Health Legislations
- Food Safety and Management
- Water supply and Quality Management
- Environmental and Occupational Emergency Response Management
- Healthcare Management
- Health Psychology
- English for Research Writing

Year 4

- Waste Water Management
- Ethics and Laws for Health Science Professional
- First Aid and Basic Life Support
- Entrepreneurship
- Research Project
- Industrial Training

PROGRESSION PATHWAY



ENTRY REQUIREMENTS

ACADEMIC QUALIFICATION

STPM / Matriculation / Pre-University

A-Level

Diploma

English Requirement

REQUIREMENTS

- ◆ Minimum CPA 2.33 in 2 of the following subjects: Biology / Physics or Mathematics/Chemistry
- ◆ Minimum Grade ID A 2 of the following subjects: Biology / Physics or Mathematics/Chemistry
- ◆ Minimum CGPA of 2.75 in related field / CGPA less than 2.75 in related field and a minimum of 3 years (36 months) working experience in the related field
- ◆ MUET: Band 3 | TOEFL: 550 | IELTS: 5.5

CAREER OPPORTUNITIES

- Environmental Health Officer (EHO) in Ministry of Health / Ministry of Housing and Local Government / Local Authorities
- EHO in Port Authorities
- EHO in Solid Waste Management / Waste Water Management Company
- EHO in industrial Sectors
- Hygiene Manager in Food Manufacturing Industry / Hospitality Industry
- Consultant in the field of Environmental Health and Safety
- Lecturer in Higher Education Institutions
- Career advancement is available from Post Graduate to Doctorate level.



MAHSA360

At MAHSA University, we provide our students with the opportunity to develop quality skills and understanding that go beyond their field of study which will prepare them for their next leap upon graduation.

MAHSA 360 is our specially designed ecosystem that works to ensure every student is nurtured and supported throughout their student journey.



MAHSA'S PASSPORT TO SUCCESS



Professional Industry-Driven Education (P.R.I.D.E) is MAHSA University's specially designed education pathway that give students the best of both academic and professional certifications. Students have the opportunity to gain professional skills through various programmes from MAHSA's collaborations with internationally recognised professional bodies. P.R.I.D.E increases the employability rate of our fresh graduates and puts them on par with the rest in the professional world.

MASTERCLASS

Students of this programme are eligible to gain add-on certification in Masterclasses. There are more than fifty Masterclasses to choose from, and all are designed to further enhance the student's employability, in line with the Industrial Revolution 4.0.

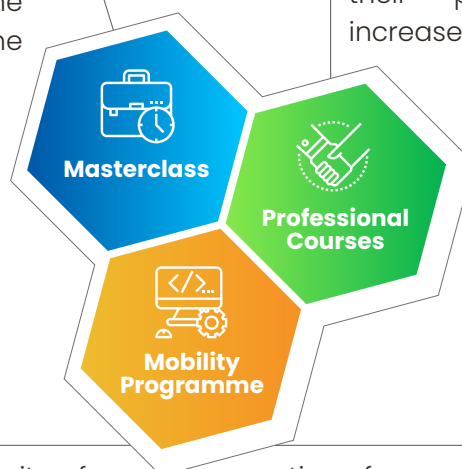
PROFESSIONAL COURSES

Through MAHSA's collaboration with internationally recognised professional bodies, students will earn certifications that will enhance their professional skills and increases their employability rate.

MOBILITY PROGRAMME

This is a unique opportunity for students to study abroad for up to one year. This programme lets students experience different cultures and

practices from around the world. Ask us about our university partners in over fifty different countries.



MAHSA

U N I V E R S I T Y

BE MORE



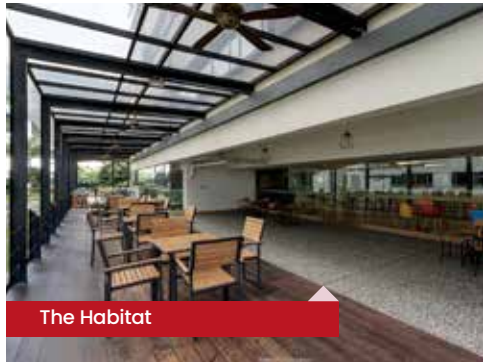
American Heart Support



Residences



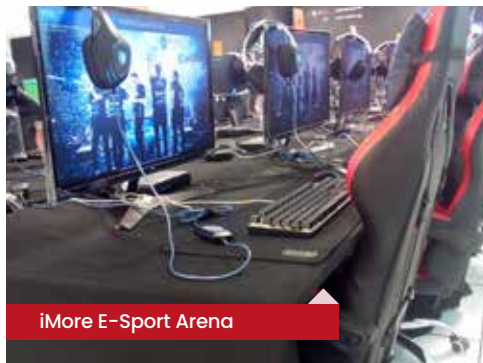
Auditorium



The Habitat



Library



iMore E-Sport Arena

Contact us
1800 88 0300

www.mahsa.edu.my

Jalan SP2,
Bandar Saujana Putra,
42610 Jenjarom,
Selangor, Malaysia

 1800-88-0300

 +603-5102 2200

 +603-7931 7118

 marketing@mahsa.edu.my

Follow us :



MAHSA UNIVERSITY