



MAHSA
UNIVERSITY



**DOCTOR OF
PHILOSOPHY
(PHD)
IN NURSING**

**FACULTY OF MEDICINE,
BIOSCIENCE & NURSING**



PROGRAMME

Overview



MAHSA was established in 2005 in Pusat Bandar Damansara, Kuala Lumpur with the vision of creating a centre of excellence in health care education in this region thereby developing qualified and compassionate healthcare professionals to serve the needs of Malaysia. By achieving University status in 2013, MAHSA University has now expanded the Nursing programme to PhD level and also Business and Accounting, as well as Engineering programmes.

PROGRAMME

Structure



Full Time
2 – 6 years

Part Time
3 – 8 years



The PhD Program is research focused. The curriculum includes research methodology (qualitative, quantitative, and mixed method), statistics, individually designed research practice and the thesis. The thesis is a culminating experience which requires the student to plan and implement a research study of significance to nursing.

All PhD students need to submit a research proposal before the thesis.

Te course contents include:

1. Research Methodology
2. Proposal development and presentation
3. Research Project in Nursing and writing report

WHY STUDY

at Mahsa University



Experienced Academic Staff
consisting of Professors, Associate
Professors and Senior Lecturers.



First Private University to
conduct a Dental Specialists
Clinical Programme leading to
a Doctoral Degree



Excellent Campus
Facilities



Excellent Facilities
equipped with CBCT and
Operating Microscope



PROGRAMME

Aim



The Doctor of Philosophy (PhD) in Nursing programme aims to prepare the Nurse scholars to develop and conduct scientific research that advances the theoretical foundation of nursing practice. The programme also helps nurses to provide evidence-based nursing practice in various health care setting.

MAHSA PHD

Programme Features



- Tailored for individualized learning
- Individualized attention through close and collaborative mentoring relationships by experienced PhD faculty.
- A growing faculty, comprising talented and enthusiastic young investigators and senior nurse researcher.
- Distance friendly technology that allows students across the country to enrol with programme.
- Part time enrollment in PhD courses is possible for student who wish to continue working

ENTRY

Requirements



MASTER DEGREE



Minimum CGPA of 3.00

CGPA above 2.00 but below 3.00/equivalent and with at least 3 years work experience in related field

Registered with Nursing Board of Malaysia / country of origin

Possess current Annual Practicing Certificate / Temporary Practicing Certificate for International candidates pursuing a clinical based programme

Able to converse in Bahasa Melayu

HEALTH REQUIREMENTS



All candidates must be certified medically fit by a registered medical practitioner within one month from commencement of the nursing programme

Students must not have any physical disabilities or impaired senses that hinders nursing dexterity

Students with medical conditions such as HIV, AIDS, Hepatitis B, Hepatitis C, epilepsy, mental health disorders and color blindness cannot be admitted into the programme

Pregnancy is not allowed throughout the course

ENGLISH PROFICIENCY (FOR FOREIGN STUDENTS)



IELTS
6.0

TOEFL
550

(if qualification obtained is from an institution where English is not the medium of instruction)

CAREER

Opportunities



Given the need for more nurses to assume leadership and advanced faculty positions and embarking as research scientist and specialised roles, a doctorate is the right credential.

FUNDING

Opportunities



Through the Ministry of Higher Education My PhD, My Brain15 program provides financial assistance for doctorate studies. The objective of the program is to generate growth of the local professional workforce that is knowledgeable, innovative, creative and highly skilled. This is in line with Malaysia's economic development under the New Economic Model.

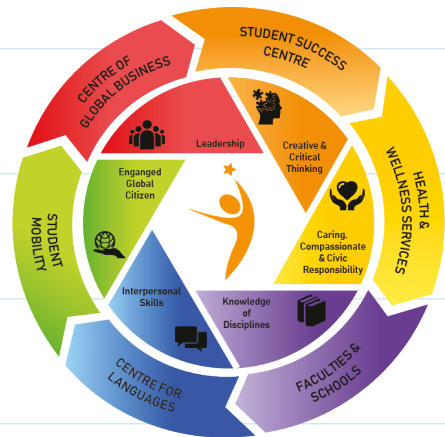
For further details please visit website: <http://www.mohe.gov.my/MyBrain15>

MAHSA360



At MAHSA University, we provide our students with the opportunity to develop quality skills and understanding that go beyond their field of study which will prepare them for their next leap upon graduation.

MAHSA 360 is our specially designed ecosystem that works to ensure every student is nurtured and supported throughout their student journey.



MAHSA'S PASSPORT

to success



Professional Industry-Driven Education (P.R.I.D.E) is MAHSA University's specially designed education pathway that give students the best of both academic and professional certifications. Students have the opportunity to gain professional skills through various programmes from MAHSA's collaborations with internationally recognised professional bodies. P.R.I.D.E increases the employability rate of our fresh graduates and puts them on par with the rest in the professional world.

MASTERCLASS

Students of this programme are eligible to gain add-on certification in Masterclasses. There are more than fifty Masterclasses to choose from, and all are designed to further enhance the student's employability, in line with the Industrial Revolution 4.0.

PROFESSIONAL COURSES

Through MAHSA's collaboration with internationally recognised professional bodies, students will earn certifications that will enhance their professional skills and increases their employability rate.

MOBILITY PROGRAMME

This is a unique opportunity for students to study abroad for up to one year. This programme lets students experience different cultures and

practices from around the world. Ask us about our university partners in over fifty different countries.





Library



The Habitat



Simulation Ward



Skills Laboratory



Residences



Clinical Skills Centre



MAHSA UNIVERSITY

Jalan SP2, Bandar Saujana Putra, 42610 Jenjarom, Selangor, Malaysia

Contact us: ☎ 1800-88-0300 📞 +603-5102 2327 📠 +603-7931 7118

✉ marketing@mahsa.edu.my 🌐 www.mahsa.edu.my

Follow us :



MAHSA UNIVERSITY