



MAHSA
UNIVERSITY



DIPLOMA IN NURSING

KPT/JPS (R2/723/4/0141) (MQA/FA9489) 08 / 25

**FACULTY OF
MEDICINE,
BIOSCIENCES
& NURSING**

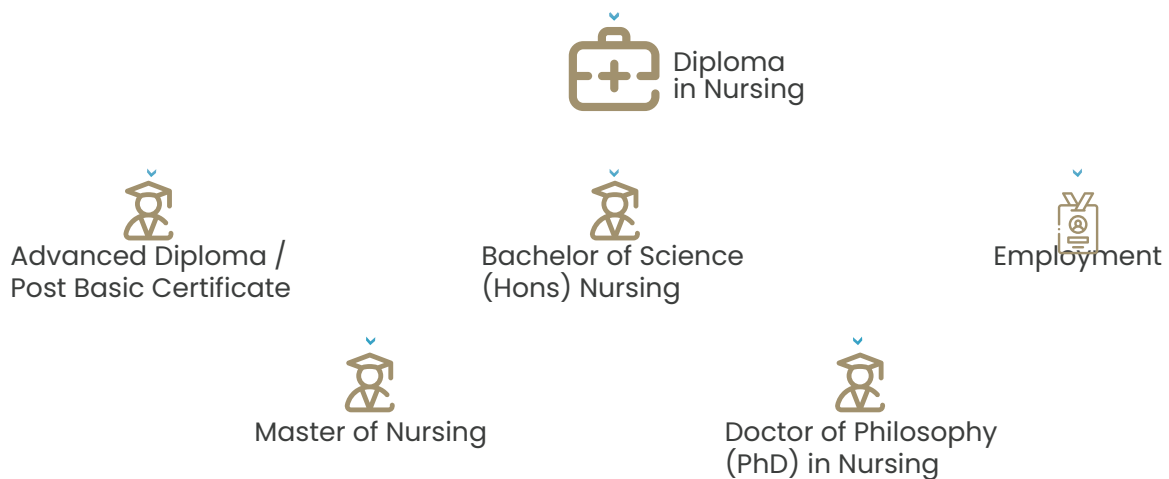
“Nurse: just another word to describe a person strong
enough to tolerate anything and soft enough to understand anyone”

OVERVIEW

The Diploma in Nursing programme at MAHSA University combines theoretical learning in classrooms with practical training in the simulation ward and skill labs, and cultivates students' know-how in nursing. This programme enables students to provide safe and competent nursing care in various healthcare settings. In addition, students will attend clinical placements in local hospitals and clinics to gain real-life working experience.

PROGRESSION PATHWAY

SPM / 'O' LEVELS



PROGRAMME STRUCTURE

YEAR 1

- Anatomy and Physiology 1 & 2
- Nursing Science 1 & 2
- Psychology & Sociology
- Communication & Public Relations
- Pharmacology in Nursing
- Microbiology & Parasitology
- Surgical Nursing
- Nursing Practice 1 & 2

YEAR 2

- Gastrointestinal Nursing
- Cardiovascular Nursing
- Respiratory Nursing
- Autoimmune, Haemopoietic & Oncological Nursing
- Integumentary, Burns & Scalds, Fluids & Electrolytes
- Renal & Genitourinary Nursing
- Obstetric & Gynaecological Nursing
- Paediatric Nursing
- Community Health Nursing, Environmental Health, Epidemiology, Communicable Disease
- Neurological & Endocrine Nursing
- Nursing Practice 3 & 4

YEAR 3

- Geriatric Nursing
- Musculoskeletal Nursing
- Ophthalmologic & Otorhinolaryngological Nursing
- Mental Health Nursing
- Emergency & Intensive Nursing
- Nursing Management & Leadership
- Medico-Legal Aspects, Personal Professional Development & Medicolegal
- Research Methodology & Statistic
- Nursing Practice 5 & 6



CAREER PATH

- Public or Private Hospitals / Medical Centres
- Nursing and Residential Homes
- Public or Private Clinics



ENTRY REQUIREMENTS DIPLOMA IN NURSING

International candidates

Pass Sijil Pelajaran Malaysia (SPM)
or *equivalent with five (5) subjects
(minimum Gred C)

- Credit in Mathematics
(Elementary or Additional or Modern).

Either one (1) of the credit below:

- Science / Biology / Chemistry /
Physics / Applied Science
- Credit in three (3) other subjects
- A pass in International English Language
Testing System (IELTS) with an Overall
Band Score of minimum 5.5;

OR

- Test of English as a Foreign Language
(TOEFL)
- TOEFL Paper Based Test (TOEFL PBT)
a minimum score of 515.
- TOEFL Computer Based Test (TOEFL CBT)
a minimum score 215.
- TOEFL Internet Based Test (TOEFL IBT)
a minimum score 80.
- Cambridge Advance English (CAE)
- Cambridge Proficiency English (CPE)
- Pearson Test of English (PTE)

*Equivalent- refers to the overseas academic
qualification obtained that is equivalent to SPM as
approved by MQA).

Malaysian candidates

Pass Sijil Pelajaran Malaysia (SPM)
or *equivalent with five (5) credits

Mandatory credit in :

- Bahasa Melayu
- Mathematics (Elementary or Additional or Modern).

Either one (1) of the credit below:

- Science/Biology/Chemistry/ Physics/Applied Science
- Credit in two (2) other subjects.
- Pass in English.

OR

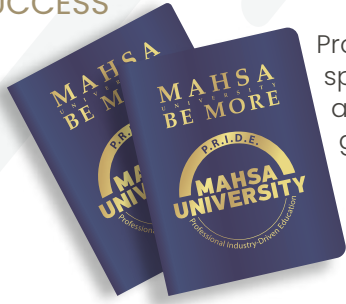
- Pass Sijil Pelajaran Malaysia (SPM).
- Possess Assistant Nurse Certificate
/Community Nurse Certificate.
- Registered with the MNB
- Possess current Annual Practicing
Certificate (APC) for nurses from MNB.
- Minimum three 3 years clinical working experience.

HEALTH REQUIREMENTS

- All students must be certified medically fit by a registered medical
practitioner within one month from commencement of the nursing programme
- Students must not have any physical disabilities or impaired senses that
hinders nursing dexterity
- Students with medical conditions such as HIV, AIDS, Hepatitis B, Hepatitis C,
Epilepsy, mental health disorders and color blindness cannot be admitted into
the programme

MAHSA's PASSPORT

TO SUCCESS



Professional Industry-Driven Education (P.R.I.D.E) is MAHSA University's specially designed education pathway that give students the best of both academic and professional certifications. Students have the opportunity to gain professional skills through various programmes from MAHSA's collaborations with internationally recognised professional bodies. P.R.I.D.E increases the employability rate of our fresh graduates and puts them on par with the rest of the professional world.

MASTERCLASS

Students of this programme are eligible to gain add-on certification in Master Classes. There are more than fifty Master Classes to choose from, and all are designed to further enhance the student's employability, in line with the Industrial Revolution 4.0.

MOBILITY PROGRAMME

This is a unique opportunity for students to study abroad for up to one year in a foreign country. This study abroad programme lets students experience different cultures and

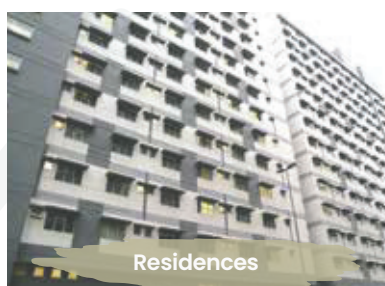
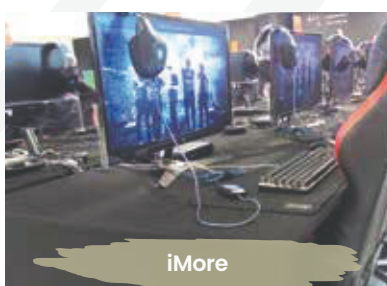
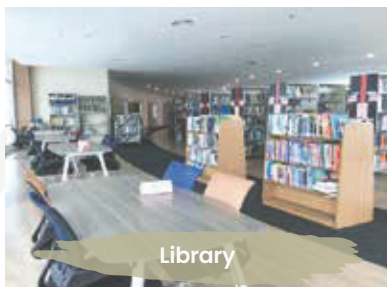
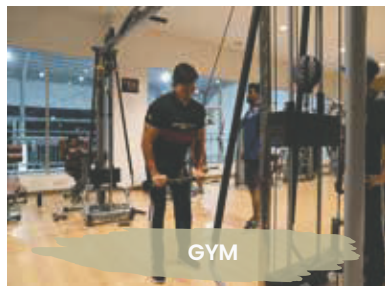
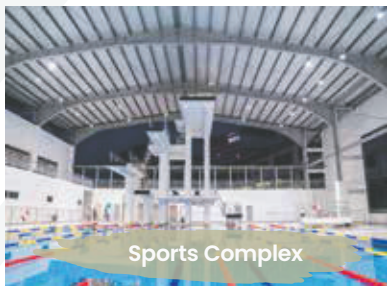
PROFESSIONAL COURSES

Through MAHSA's collaboration with internationally recognised professional bodies, students will be earn certifications that will enhance their professional skills and increase their employability rate.



practices from around the world. Ask us about our university partners in over fifty different countries.

MAHSA BE MORE



MAHSA UNIVERSITY

Jalan SP2, Bandar Saujana Putra, 42610 Jenjarom, Selangor, Malaysia

Contact us: ☎ 1800-88-0300 📞 +603-5102 2327 📠 +603-7931 7118

✉ marketing@mahsa.edu.my 🌐 www.mahsa.edu.my

Follow us :



MAHSA UNIVERSITY