



**MAHSA**  
UNIVERSITY



# POST BASIC CERTIFICATE IN **CRITICAL CARE NURSING**

KPT/JPS (N/723/2/0004) (MQA/PA12886) 04/25

**FACULTY OF  
HEALTH SCIENCES,  
NURSING, AND  
EDUCATION**

Nurses dispense comfort, compassion, and caring without even a prescription

- Val Saintsbury



## OVERVIEW

The Nursing profession is increasingly a demanding occupation and we are faced with various illnesses and health outcomes. prospects for critical care nurses are very good. Critical Care Nursing course prepares graduates in the enhancement of knowledge and practice, especially in the promotion of quality care. Critical care nurses will be attached at hospital settings where critically ill patients are present, including intensive care units, cardiac care units, telemetry units, progressive care units, emergency departments, and recovery rooms. Nurses in this discipline to some extent need have a strong personality and be able to disengage yourself emotionally.

## PROGRESSION PATHWAY



—● DIPLOMA IN NURSING



—● CERTIFICATE IN CRITICAL CARE NURSING



—● BACHELOR OF NURSING (HONS)



—● MASTER IN NURSING/ EDUCATION/ MANAGEMENT



—● PHD/DOCTORATE IN NURSING



## PROGRAMME STRUCTURE

### Duration: 6 Months

- Anatomy and Physiology of Core Systems
- Personal and Professional Development
- Principles & Practice of CCN,
- Critical Care Nursing 1: Pulmonary Systems
- Critical Care Nursing 2: Cardiovascular & Management of Cardiac Arrest
- Critical Care Nursing 3: Renal Failure, Endocrine Disorders, Neurologic System, Gastrointestinal Disorder & Trauma & Emergency,

## ENTRY REQUIREMENTS

### Requirements

Diploma in Nursing or its equivalent and from an institution that is recognised by Nursing Board Malaysia

Minimum three (3) months working experience in related field

Minimum 2 years clinical working experience

Registered with Nursing Board Malaysia

Possess a current Annual Practicing Certificate (APC)

Registered with Nursing Council or Board of Nursing at respective Country



## CAREER OPPORTUNITIES

- Critical Care Nurse
- Nurse Educator
- Clinical Instructor in a higher education institution
- Nurse Researcher
- Self-employed

# MAHSA's PASSPORT TO SUCCESS



Professional Industry-Driven Education (P.R.I.D.E) is MAHSA University's specially designed education pathway that give students the best of both academic and professional certifications. Students have the opportunity to gain professional skills through various programmes from MAHSA's collaborations with internationally recognised professional bodies. P.R.I.D.E increases the employability rate of our fresh graduates and puts them on par with the rest of the professional world.

## MASTERCLASS

Students of this programme are eligible to gain add-on certification in Master Classes. There are more than fifty Master Classes to choose from, and all are designed to further enhance the student's employability, in line with the Industrial Revolution 4.0.



## PROFESSIONAL COURSES

Through MAHSA's collaboration with internationally recognised professional bodies, students will be earn certifications that will enhance their professional skills and increases their employability rate.

## MOBILITY PROGRAMME

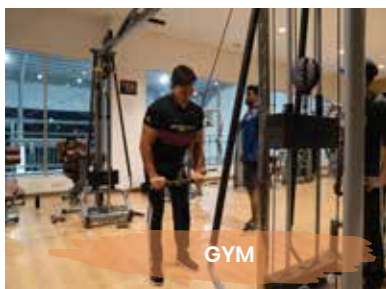
This is a unique opportunity for students to study abroad for up to one year in a foreign country. This study abroad programme lets students experience different cultures and

practices from around the world. Ask us about our university partners in over fifty different countries.

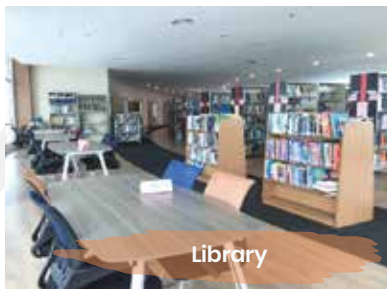
# MAHSA BE MORE



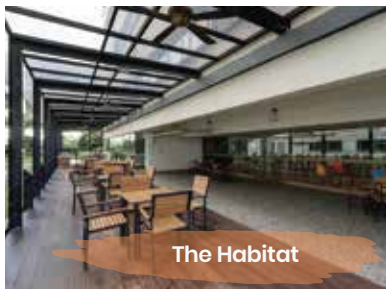
Sports Complex



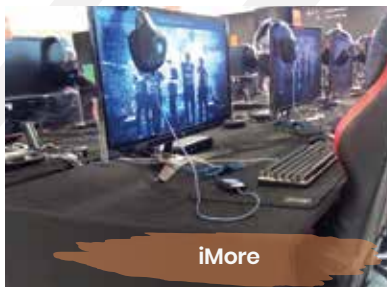
GYM



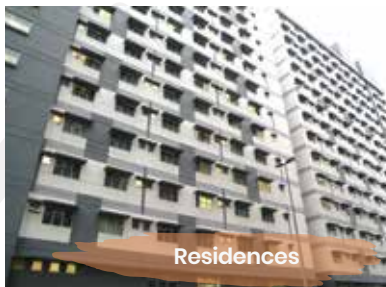
Library



The Habitat



iMore



Residences

## MAHSA UNIVERSITY

Jalan SP2, Bandar Saujana Putra, 42610 Jenjarom, Selangor, Malaysia

Contact us: ☎ 1800-88-0300 📞 +603-5102 2327 📠 +603-7931 7118

✉ marketing@mahsa.edu.my

🌐 www.mahsa.edu.my

Follow us :



MAHSA UNIVERSITY